



Cooling Water Tower



Evaporative Condenser



Installation

1. Asia World-Expo (Airport)
2. Castle Peak Hospital
3. King Palace Plaza
4. MG Tower
5. Melbourne Plaza
6. Mykadan Capital Tower
7. Ford Glory Plaza
8. TG Place
9. COS Centre
10. Le Meridian Hotel, Cybersport
11. King Wing Plaza Ph.1
12. King Wing Plaza Ph.2

Trial sites

1. Gland Lisboa Hotel, Macau
2. Mandarin Oriental Hong Kong
3. Kerry Centre
4. China Construction Bank Tower
5. Manulife Financial Centre
6. Times Square
7. Courtyard by Marriot Hotel
8. Hasel
9. Hong Kong District Cooling Plant
10. ASB Industrial Plant
11. Disneyland

Cooling Water Tower Asia World—Expo

Date: June 2016

Tower No.4
Capacity: 500RT



Cable entry



Ionizer Basket

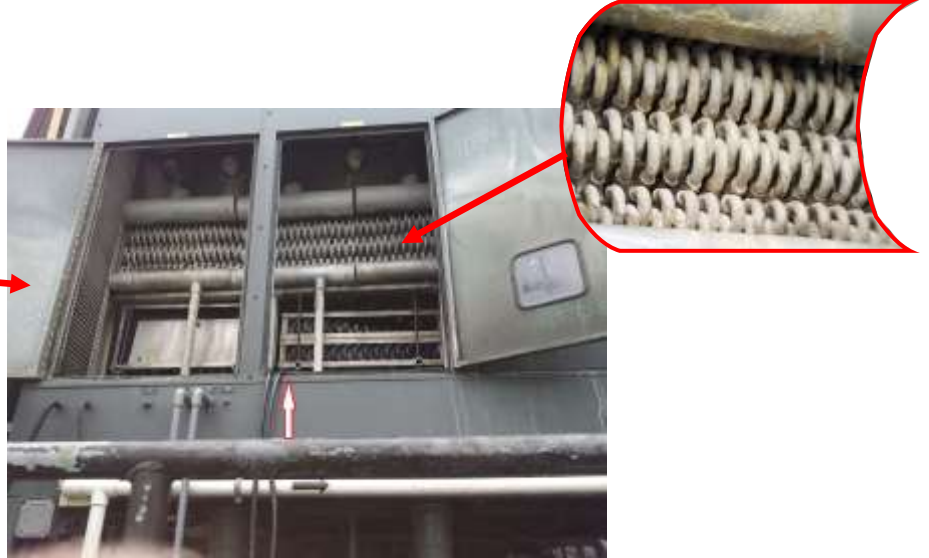


Control Panel

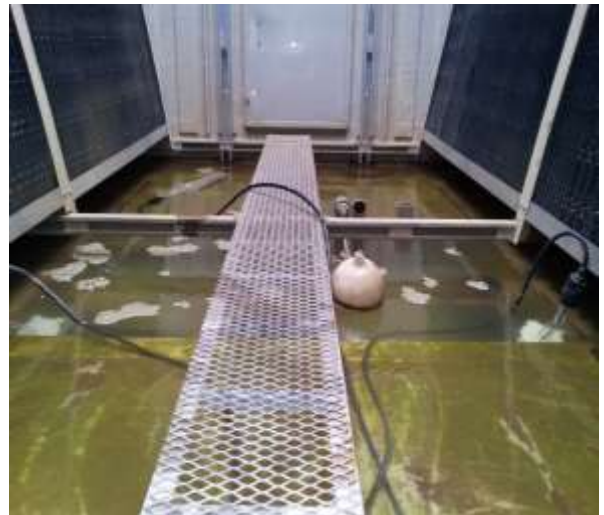
Operation after 2-weeks period



Extracted Scale: 5 kg













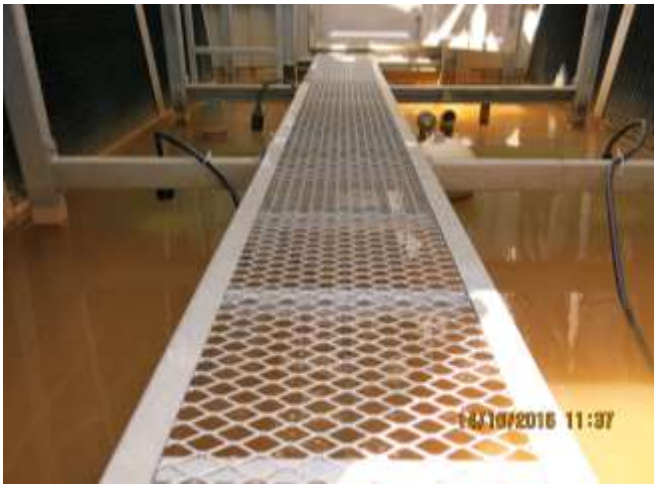




Scale with rust particle extracted









Stainless Steel
Panel



After operation in 10 days, extracted scale deposit was up to 10kg

















Controller Panels and cable entry

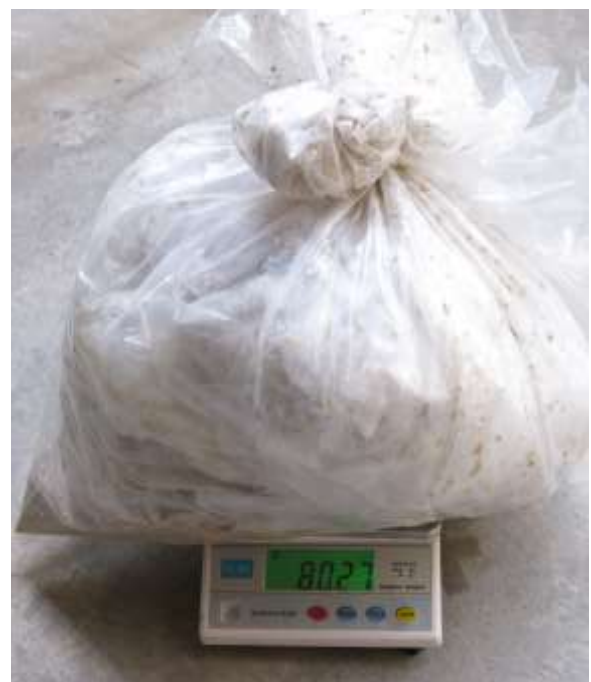
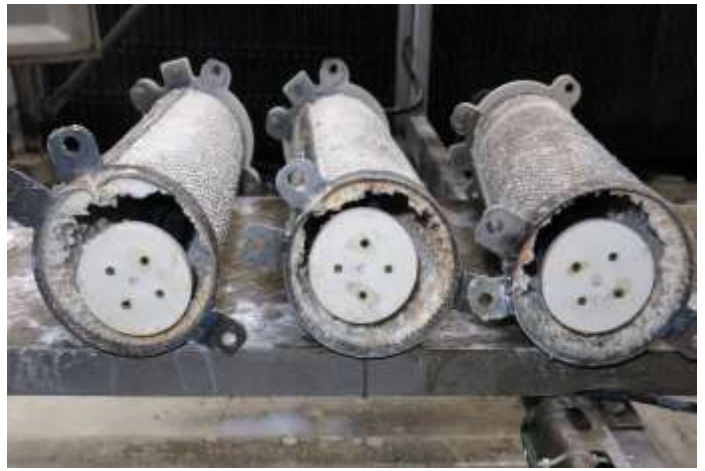




Plate Heat Exchanger





Scale blocked cooling water passage at tower top



After 2 weeks' operation, ionizer accumulated with scale deposit